



DONOR WALL & MEMORIAL ART

Showcase the Legacy of
your Donors

Silver Cross Hospital

Donor Wall



Above & right: carved and edgelit donor wall,
Carved names are embellished with metallic paint.

Below: stained glass landscape scene in chapel



Making a lasting and memorable impression to honor your donors is our goal. As designers, we welcome challenges to our creative imaginations in our chosen medium of art glass. The endeavors we have completed give a glimpse into the diversity of our talents and demonstrate our flair for incorporating different materials together in our art.

Our team works together and collaborates with you to analyze what techniques and looks would work best for your project. We will explore those ideas and develop a range of options to fulfill your needs.



Silver Cross Hospital, New Lenox, IL

"Sheri has assisted Silver Cross Hospital with a couple of significant, quality projects over the past several years. One, she did the stained glass panels in our chapel and the second, a more recent project, was our donor wall. Both projects are beautiful and magnificent focal points in our newly constructed hospital. The hospital continues to be complimented daily on the building and decor, and both of Sheri's projects are always included in the positive comments."

"I also found Sheri to be a pleasure to work with. She is thorough and knowledgeable in her preparation and is a hands-on professional who works diligently to ensure the project is completed to the customer's satisfaction."

-Geoffrey Tryon, Vice President of Operations at Silver Cross Hospital

How and Why: Donor Appreciation

Many donors want to have a more permanent legacy of their generosity. If your organization wants to attract higher level donors, a Donor Wall may be the answer. The artistic staff of Sheri Law Art Glass can create a vision that speaks to your passion, and in the process, the goal is that more will follow and be grateful for the opportunity to help secure the future.

Donor Walls & Memorial Art add appreciation for those who give, and inspire new donors for Colleges, Hospitals, Libraries, Churches, Class Gifts, Airports, and more.

Steps to Design Your Donor Wall and Memorial Art

Donor Walls convey an organization's appreciation for your donors' generosity, not only by listing their name, but incorporated into a work of art. With so many variables to consider, we have provided a guide to start the process.

- 1. Title** What is the mission you have accomplished with the donations? This can be incorporated into your wall, a separate sign, an overall heading, or a combination. Will you include your organization's name or logo?
- 2. Location** Position in a strategic location to maximize visitors' attention. What size is allocated for the donor wall? Important elements that impact choices are the décor and lighting for this area. Provide photos, color samples, fabrics, or any pertinent information.
- 3. Levels** Establish how many different levels of giving will be recognized. What will be the minimum number to be included? Donor levels can be designated by size, color and other details. Often the amounts of each category are not listed, respecting donors' privacy.
- 4. Budget** Is there an amount that you are comfortable specifying for this project?
- 5. Additions** Will future campaigns add to this project? This will need to be considered when designing your donor wall.
- 6. Timeline** Production schedule of custom projects will be discussed based on the scope of the project. Average lead times are between 8-12 weeks.

INITIAL CONSULTATION

We recommend meeting at the studio so that you can personally experience the different types of art glass we offer. Please review the Donor Wall Guidelines so that we have a starting point when we meet to discuss your goals, objectives, and preferences. Each donor wall is unique, a work of art that will be created just for you. At our meeting, we will discuss how to best accomplish your goals. When we have a firm direction, we will submit a proposal with the concept and budget guidelines outlined in your project.

Give us a call to set an appointment to get started!

Homer Township Public Library Memorial Art

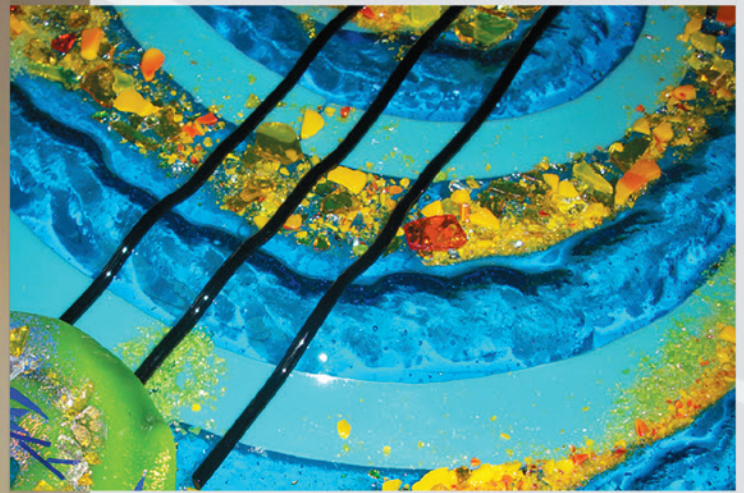


Homer Township Library, Homer Glen, IL

"I designed this in memory of 'Mikey' who lost his life in action in Iraq. Many meetings with his family helped me to understand what he loved which included family, music, sports, and the outdoors."
-Sheri Law

Elements incorporated into the fused art glass:

- Family – each of the 6 circles represents a family member
- Guitar pick & strings – he loved playing his guitar
- Family blood line – denoted by red around the entire circle
- Quote – taken from his favorite song by Pearl Jam
- Sports – confetti colors for the Bears and Cubs
- Airbrushed yellow – for his sunny disposition
- Accents of specialty glass – represent water and mountains



Fused Glass Art in Heroes' Quiet Reading Room

"As part of state standards the library hired renowned artist Sheri Law to complete two separate art pieces to anchor our Michael C. Olivieri Heroes' Quiet Reading Room. The Homer Township Library Board could not be happier with these two pieces."

"From discussion, offering options and solutions, to completion, all had great benefit to the success of executing perfect art pieces, while recognizing the budget we had."
-Sheree Kozel-La Ha, Executive Director,
Homer Township Library



Homer Township Public Library

Donor Recognition Tree



Homer Township Public Library,
Homer Glen, IL

Donor Recognition Tree

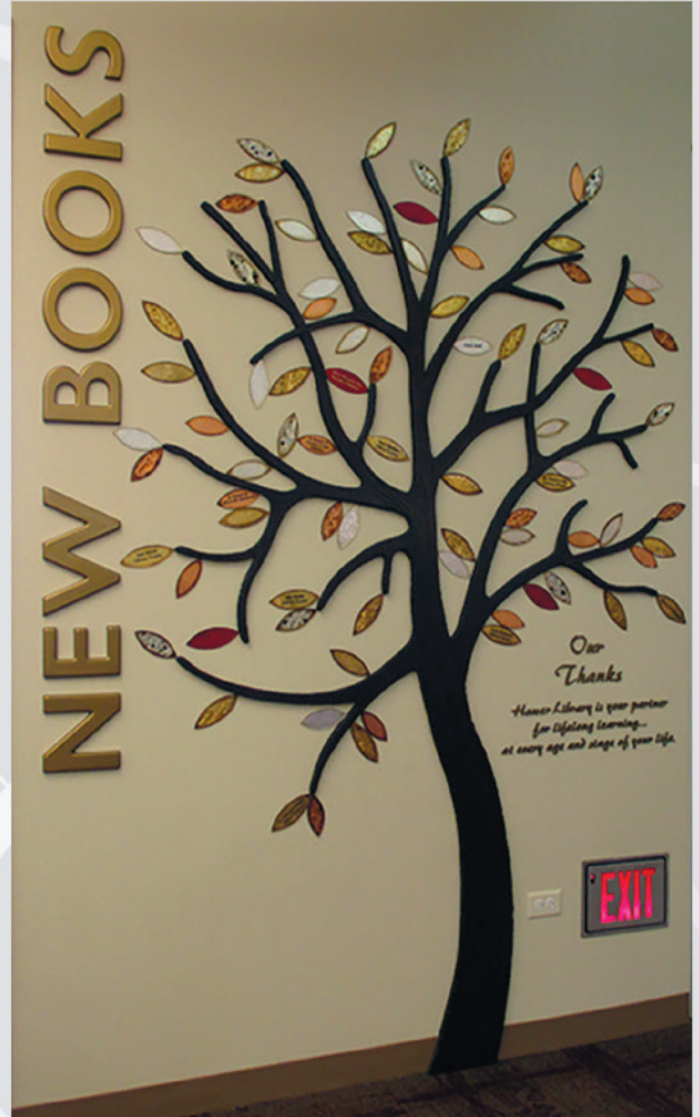
An elegant donor tree is featured in the library lobby. Standing over 8 feet high, it displays custom glass leaves embellished with platinum, ruby, gold, silver, and copper metallic leaf. These sparkling leaves are textured and glisten with fused frits and chunks.

Donors can select an artistic fused leaf with the level of support signified with the colors and leaf size. Each donor leaf has their inscription beautifully carved and displayed on the donor tree.

It's fun to see the tree grow as more donor leaves are added!

Heroes' Quiet Reading Room

The military presence is exhibited with an American flag behind an etched glass facade and secured with stainless star standoffs. The words "Freedom, Serve, Remember, and Honor" make a dramatic statement.



Rotary International, USO

Donor Wall & Memorial Art



Above & right: edgelit laser engraved glass plaques with donors' names and portraits. Space holds 1,250 plaques.



Rotary International, Evanston, IL

"I selected Sheri Law's company to produce glass portraits for our donor wall at the Arch Klumpp Gallery. The donors featured in this space were high level, passionate members who contributed a significant amount of money to our Rotary Foundation."

"During the time that Sheri Law and I worked together, I found her to be professional, attentive and detail oriented. She was responsive to our needs and provided numerous samples in advance to help us select the appropriate design."

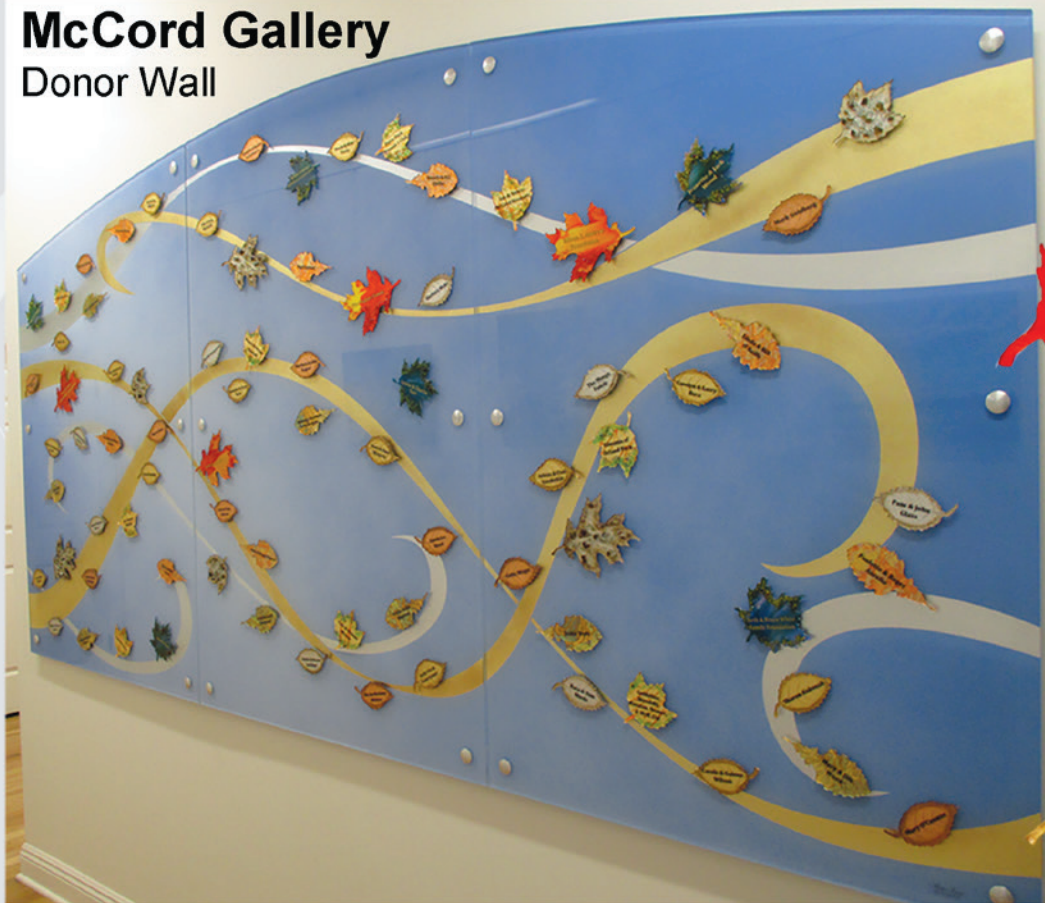
"Sheri and her staff were impressive in developing over 330+ portraits in three months. All portraits were delivered in perfect condition and are now displayed in a lighted gallery at One Rotary Center."
-Jane DeMoss, Design Manager at Rotary International



USO, O'Hare International Airport Terminal 2 Center, Chicago, IL
Carved and backpainted plaques with pearl paints

McCord Gallery

Donor Wall



McCord Gallery, Palos Park, IL

The inspiration for McCord Gallery was the setting of their building on a hill against the beauty of the blue sky. The gallery requested leaves in their design and the colorful combination of the leaves flowing across the blue sky with a swirl of gold and silver sweeps created a dramatic impact. Size: 10' W x 5' H

- Sandblast artist starting the backpainted gradient blue sky background
- Leaves with carved and backpainted vein detail
- Sandblast artist laying out swirl design on glass



University of St Francis, Lincoln Way High Schools

Donor Wall & Class Gifts



Right: Fused Glass Donor Wall with Metal Frame. Donor's names are Carved and Painted on the front of each plaque, Fused Glass Art pieces are displayed throughout the piece.

Below: Stained Glass with Fused Accents, Senior Class Gifts for High Schools

Lincoln Way North, Frankfort, IL



University of St Francis, Joliet, IL

Lincoln Way West High School, New Lenox, IL



708-301-2800

12551 W 159th St
Homer Glen, IL

sherilaw.com

